

The ITIL® Process Map V3

Factsheet

The ITIL® Process Map V3 is a complete ITIL Reference Model, presenting the ITIL contents in a graphical, clearly structured and navigable way. It explains how ITIL V3 really works and does away with the need to sift through numerous ITIL books with thousands of pages.

Target Groups

The ITIL® Process Map V3 is designed for IT organizations or IT service providers who

- are planning a complete or partial introduction of IT Service Management according to ITIL,
- need to re-evaluate their ITIL processes according to the new ITIL V3 recommendations
- prepare themselves for a certification according to ISO 20000.

Benefits of using an ITIL Reference Process Model

Our ITIL Reference Model - the ITIL® Process Map V3 - accompanies you in all the necessary steps from the planning of an ITIL or ISO 20000 project through to a transformed IT organization, working along best-practice principles.

When using it, you will benefit in several ways:

- The graphical and navigable representation facilitates an understanding of the ITIL processes and their complex interrelationships. The ITIL Process Map is thus a very cost-efficient way of giving everyone in your IT organization a good understanding of ITIL.

- The various ITIL process templates and the complementary project manual provide guidance on how to set up and carry out an implementation project.
- Effort can be saved during process design and documentation, as you modify existing process models and document templates - rather than starting with a blank page.
- A high quality of the resulting process documentation is assured - an essential tool to market your IT organization as an effective and efficient provider of IT services.

ISO 20000 Compatibility

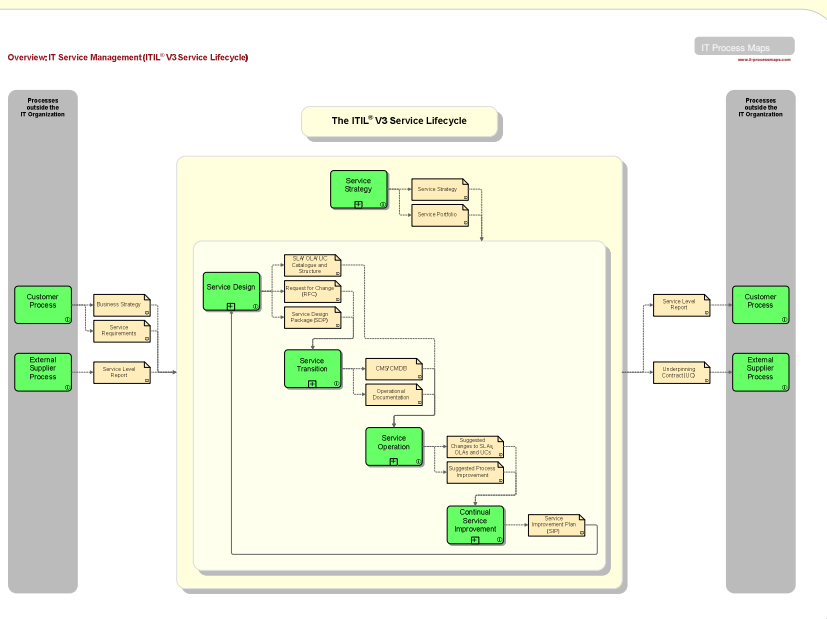
Our ITIL Reference Process Model is fully compatible with ISO 20000. We also offer an Add-On (the "ITIL – ISO 20000 Bridge") which maps all of the ISO 20000 requirements to the ITIL processes.

Used in combination, both products offer the ideal way to get started with your ISO 20000 initiative and prepare yourself for the certification audit.

Versions and Platforms

The ITIL® Process Map V3 is available in English and German for the following process management applications:

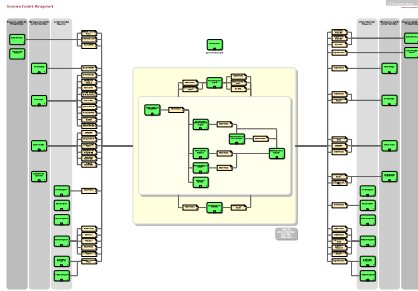
- Microsoft Visio™
- ARIS Process Platform™ by IDS Scheer AG
- Corel iGrafx® Flowcharter™/ Process™
- QMAP/ QViS Professional™ (English)



High-Level View: The ITIL V3 Service Lifecycle

Contents of the ITIL Process Map V3

Our ITIL V3 process templates cover the complete ITIL V3 Service Lifecycle: Service Strategy, Service Design, Service Transition, Service Operation and Continual Service Improvement.



Overview depicting interfaces and sub-processes for an ITIL main process

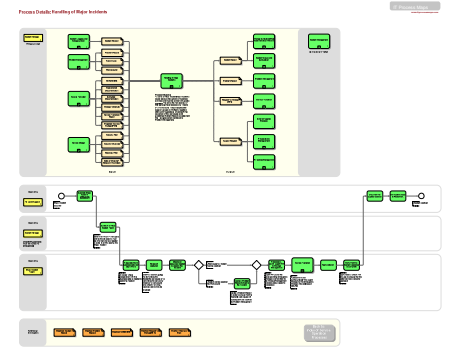
One of the main strengths of the ITIL Process Map is its presentation of the ITIL contents in four levels of detail, which allows you to start with looking at the big picture and to drill down into details where needed:

- The top-level process diagram presents the new ITIL V3 Service Lifecycle on one single page
- Five diagrams on detail level 1 explain the five ITIL V3 Core Disciplines
- A set of 20 overview process models on level 2 provides insight into the ITIL V3 main processes
- On level 3, 104 detailed activity chains show what needs to be done by whom as part of a process
- A complete RACI Matrix in the form of an Excel table illustrates the participation of the ITIL roles in the various ITIL V3 processes
- 84 Checklists and document templates describe process outputs and other aspects of the processes in more detail
- A collection of KPIs supports the definition of process metrics
- Finally, our „Guide on Implementing ITIL in 10 Steps“ helps you to get started with ITIL

RACI Matrix illustrating the Participation of the ITIL Roles in the various ITIL V3 Processes

Take ITIL into your own Hands

If you don't have the financial resources to go for a full-blown ITIL consulting package, our ITIL templates offer you an alternative route for taking the ITIL knowledge on board.



Detailed process description (BPMN Activity Chain)

About IT Process Maps GbR

IT Process Maps GbR was founded in 2006, drawing on many years of experiences in the fields of IT Management as well as Process and Project Management.

IT Process Maps GbR specializes in the provision of Reference Process Models for the IT organization based on time-tested Best-Practice recommendations.

More Information

At www.en.it-processmaps.com you can learn more about us and the ways the ITIL® Process Map V3 can be applied.



IT Process Maps GbR
Stefan Kempter and Dr. Andrea Kempter
Am Hörnle 7
87459 Pfronten
Germany
Tel. + 49 8363 92 73 96
Fax + 49 8363 92 77 03
info@it-processmaps.com
www.en.it-processmaps.com

Member of itSMF